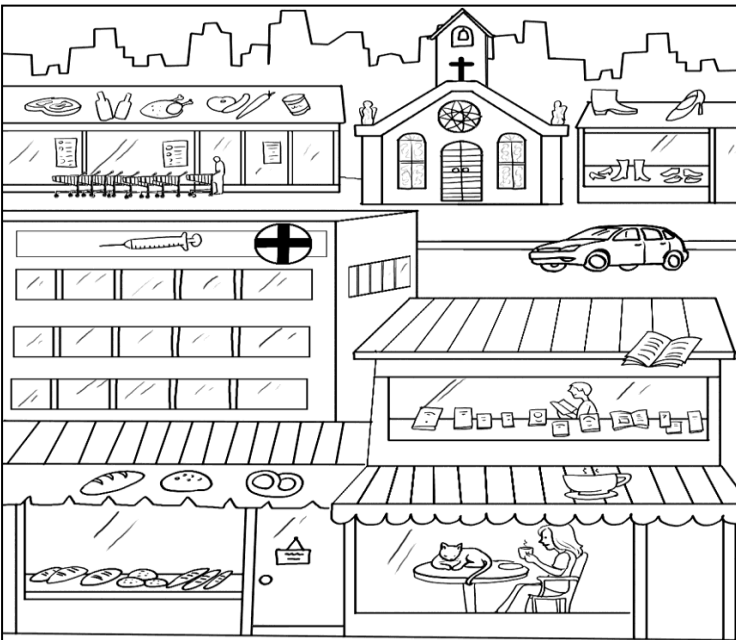
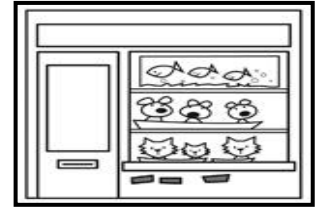
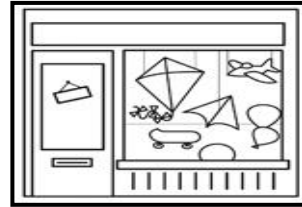
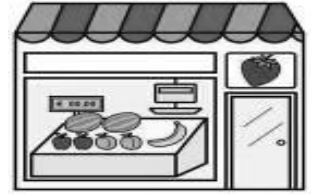
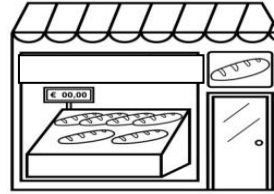
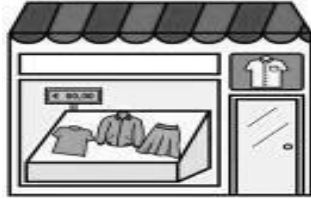
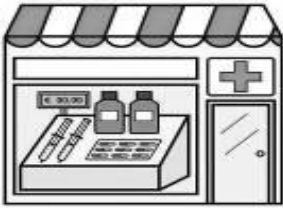




SHOPS IN TOWN

1) WRITE THE NAMES OF THE SHOPS UNDER THE PICTURES



2) LOOK AT THE TOWN AND CIRCLE THE CORRECT PREPOSITION

- 1.- The church is.....the shoe shop
a)near b)behind
- 2.- The hospital is the baker's.
a) behind b)under
- 3.- The café is the bookshop
a) in front of b) next to
- 4.- The bookshop is the hospital.
a)between b) next to
- 5.- The baker's is.... the café
a) near b) next to
- 6.- The church is the supermarket and the shoe shop.
a) next to b)between

3) LISTEN TO THE TEACHER AND CIRCLE TRUE OR FALSE LOOKING AT THE MAP

- 1) TRUE FALSE
- 2) TRUE FALSE
- 3) TRUE FALSE
- 4) TRUE FALSE
- 5) TRUE FALSE
- 6) TRUE FALSE
- 7) TRUE FALSE
- 8) TRUE FALSE

